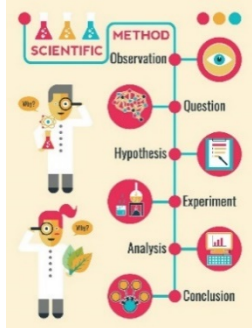


Day 10 - Forensics - 9-5-24 to 9-6-24

CLASSWORK – Types of Evidence



1) Read/Outline: (20 min)

<https://www.indeed.com/career-advice/career-development/different-types-of-evidence>

Skim/read the above linked article from Indeed.com on “**21 Different Types of Evidence (And How They Affect a Case)**”.

For each of the (21) types, write an explanation further clarifying the concept.

2) VIDEO NOTES:

Types of Evidence – Ray Law

<https://www.youtube.com/watch?v=lkOZOHG0oTQ>

Types of Evidence – Mr. P Science (start at 6:28)

<https://www.youtube.com/watch?v=3N6lnU1rxFY>

3) EXPLAIN/DRAW:

Take a sheet of blank paper, holding in “hamburger” format fold to make 4 boxes. Explain, illustrate, and label your drawings. Your text can be in pen, and your drawings must be in colored pencil.

FRONT

1) Explain **admissible vs inadmissible evidence**?

<https://www.indeed.com/career-advice/career-development/different-types-of-evidence>

2) What is the **direct vs circumstantial evidence**?

<https://www.ce9.uscourts.gov/jury-instructions/node/304>

3) What is **testimonial evidence**; how does it differ from **physical evidence**?

<https://nij.ojp.gov/nij-hosted-online-training-courses/crime-scene-and-dna-basics-forensic-analysts/evidence-crime-scene/types-evidence#:~:text=Evidence%20can%20be%20divided%20into,latent%20fingerprints%2C%20and%20biological%20material.>

4) Compare **class & individual physical (real) evidence** (#6)

<https://www.indeed.com/career-advice/career-development/different-types-of-evidence>

BACK

5) What is **prima facie (case) evidence**?

<https://www.chblawfirm.com/blog/what-is-a-prima-facie-case/>

6) Explain **impression or pattern evidence**.

<https://nij.ojp.gov/topics/articles/overview-impression-and-pattern-evidence>

7) Define **trace evidence**.

<https://www.forensicsciencesimplified.org/trace/>

8) What is **exculpatory evidence**?

https://en.wikipedia.org/wiki/Exculpatory_evidence

4) HOMEWORK:

- 1) Complete the **Read/Outline** assignment.
- 2) Finish the **Video Notes** assignment
- 3) Complete the **Explain/Draw** assignment.

Submit assignment on Schoology when complete.